

GATEWAY

the life success course.



Every person would like to be extraordinary: to have our lives matter, to excel in the areas that are important to us – our families, our work, our intimate relationships, our financial futures.

Here is an experience which allows for real power, integrity and courage in all the areas that are important to us.



Everyday we are presented with opportunities to either live a *business-as-usual* life, or to create something beyond who we've been and what we know. We know that every human being has potential far beyond what they've ever thought, but you need knowledge to put this to use.

Because it is your life, this knowledge must come from within you.

Here is a key ...



GATEWAY to experience ...

A profound technology for discovery... explore who you are, why you are here and how you can create a truly fulfilling vision for your life.(Imagine who you could become given all the tools).

A truly effective way for making relationships work - all relationships. A technique for breaking through to new levels of intimacy, effectiveness and self-expression. Explore the opportunity we have to express ourselves individually and fully.

Rediscover and pursue our passions for life

Crisis and breakdowns are a source of latent potential - this is a fundamental shift - that gives power and breadth to the ability to live creatively and successfully. We find ourselves being powerful in the face of that which has stopped us before. Once you have experienced this, and achieved it - no one can ever take it away from you, nor make you doubt it! It is yours and yours for good!

We know that each person is truly unique

We each experience life in our own way. We learn via our past experiences, culture, education and upbringing. Even identical twins each have a unique outlook on life. We develop this outlook into ways of being and acting, we develop patterns of behaviour, practices and approaches that make up our personality, our style - who we consider ourselves to be - and ultimately what we consider reality to be.

It is human to construct such realities, however we forget (or can't see) that we are the ones who construct them. The recognition of this and the striking limits that it imposes allows for a refreshing freedom. People, situations, and our approach to life can alter dramatically - if we so choose.



Change Your Mind, Change Your Life!



Gateway technology is designed so that each person is able to apply it to whatever is meaningful to them. The magic of Gateway is that people bring it to who they are and leave with results tailored to their own unique commitments and interests.

Situations that may have been challenging or difficult become fluid and open to change. We find ourselves no longer limited by a finite set of options, and able to achieve what we want with new ease and enjoyment. We are left, possibly for the first time, with a choice about who we are and who we can be. There is a freedom and ability to take action that was unavailable before - even familiar actions produce a whole new level of effectiveness.

Real learning with real results

Leading edge human technology provides you access to potential, passion and vitality. Gives you power to be effective in those areas of your life that are important to you and the freedom to be at ease no matter the circumstances.

The unique approach supports you to turn your intentions into results, balance the demands of work, family and self and develop an indomitable sense of purpose, balance and personal power. Acquire lifelong tools for decision making, win-win results and effective, result producing actions.

What Gateway is not

Gateway is not religious - although people of many faiths have found it enhances their own convictions.

Gateway is not psychology or psychiatry. It is not coping or managing - it is transcending, transmuting and transforming.

Gateway does not want to fix you or change you - it simply supports you to where you would like to go.

How long does it take and how long does it last?

Although Gateway only takes three evenings and a weekend the tools and abilities you learn never leave you, and are yours forever.

Gateway is not a one-time event. It is a moment-by-moment approach to being alive. The learning that takes place on Gateway is an experience and can never be lost - just like riding a bicycle or the first time you fall in love.

Powerful personal results... Guaranteed!

We fully stand behind the effectivity, results and quality of Gateway therefore we offer a full money back guarantee. So there is absolutely no risk for you. Only the opportunity to reap powerful lasting benefits. If after completing Gateway you are not fully satisfied for any reason, your entire tuition fee will be refund.

That is how certain we are Gateway will work for you - Guaranteed!

GATEWAY

... a journey of being and becoming ...

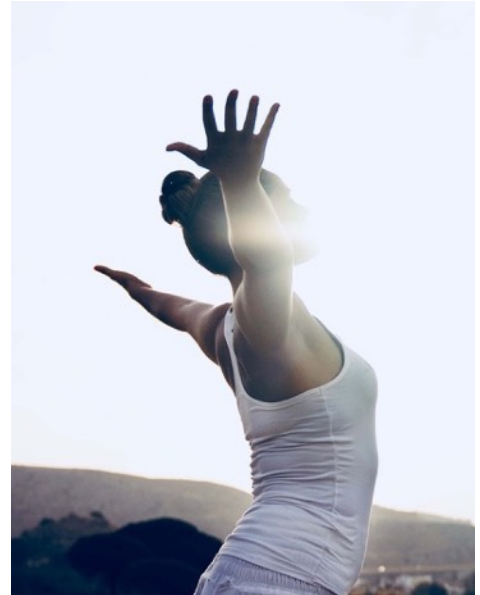
The GATEWAY Programme uses a unique learning approach in which participants engage honestly, directly and effectively with issues at the heart of their lives.

You will have an opportunity to explore topics such as:

Trust, Integrity and Choice
Keeping Agreements
Communication
Being Human
Limiting Beliefs and Assumptions - "Blindspots"
Effective Language, Action and Thought Processes
Critical Areas of Career and Personal Success
Crises, Breakdowns and Failure
The Power to Challenge Yourself

Graduates cite results that include:

Increased ability to produce intended results
More effective leadership abilities - personal and professional
More satisfaction with work and accomplishment
Renewed sense of direction
Gain in self-esteem, openness and aliveness
Enhanced satisfaction, acceptance and joy in relationships
Successfully managed change and crises
Breakthrough self-imposed limitations
Greater life balance leading to deeper fulfilment
Enhanced personal power, greater freedom, enriched capacity for love



**"The best time to invest in your future is when?
... hmmm, that's what we think too!"**



Communication

What is the biggest challenge in all relationships? What is the solution to the biggest challenge in all relationship? Discover how you can be a powerful and inspiring communicator. Learn the most effective model for interpersonal communication yet. And, begin to master the single most powerful skill available for us as human beings within all the areas of our lives that matter.

GATEWAY

... a journey of being and becoming ...



Whether your passion is for excellence in your professional life, your personal life or both ...

Gateway will assist you in making it happen NOW!

How to register

Call or email the Life Dynamics Training office today to reserve your seat on the next GATEWAY.

Tuition

Tuition fee for Gateway R4500
50% non-refundable deposit payable.
Balance due 14 days prior to programme commencement date.

Payment Methods and Banking Details

Life Dynamics Training accepts most major credit cards, electronic transfers and, of course, cash.

For **Electronic Transfer** payments:

To: Life Dynamics Training CC
Bank: Nedbank
Branch: Hyde Park
Account No: 1972131990
Branch Code: 197205
Reference: (Your Full Name)

Credit Card payments please contact our offices.

Cash payments can be collected by a representative.

Debit Order - an interest free debit order is available to assist you financially to pay over several months. Please inquire from our office for debit order forms.

Date and Times

Call our Office or check our website calendar for upcoming programme dates.

Thursday eve 6:00 pm - 12:00 am.

Friday eve 5:00 pm - 12:00 am.

Saturday 9:30 am - 9:00 pm.

Sunday 9:00 am - 7:30 pm

Tuesday eve 6:30 to 9:45 pm

Location

Currently Gateway is presented in Johannesburg, Durban, Cape Town, London and Dubai.

Contact Details

Email: gateway@lifedynamics.co.za

Telephone: Joni Norval: 083 292 5229

Dr Steven Gullan: 082 330 3857

Website: www.lifedynamics.co.za



Life Dynamics Training

LOGISTIC AND INFORMATION

What to Wear

Neat, casual clothing is appropriate in the programme room. The room is air-conditioned, so you may wish to dress in layers for possible temperature changes. You may spend time sitting on the floor, rather than in chairs, and appropriate clothing is recommended.

On the last day of the training, you may wish to dress more formally (or bring special attire) for a graduation ceremony. The choice is yours.

Food and Sleep

Throughout the training, it is important that you take care of your health by getting sufficient sleep and eating nutritious food.

During evening sessions, there will be several breaks of approximately 15 to 30 minutes.

During full-day sessions, there will be breaks approximately every 2 to 3 hours, as well as one meal break each day in the late afternoon.

Be sure to eat a sustaining meal daily before coming to the programme. In addition, you may want to bring snacks with you to eat on breaks.

Please review the programme ending times, and if necessary, adjust your schedule to be assured of getting sufficient sleep each night.

This is your personal responsibility. If you cannot adjust your current work schedule or other responsibilities so that you get adequate rest and nutrition during the programme, you should consider rescheduling your participation at a time when this will not present a problem.

Prescription Medications

Please inform the staff, at the programme room registration, if, during the hours of your Gateway Programme, you are required to take any medicines prescribed by a physician and the times of day you must take it. Be sure to bring with you sufficient amounts of such prescription medicine(s).

Unusual Symptoms

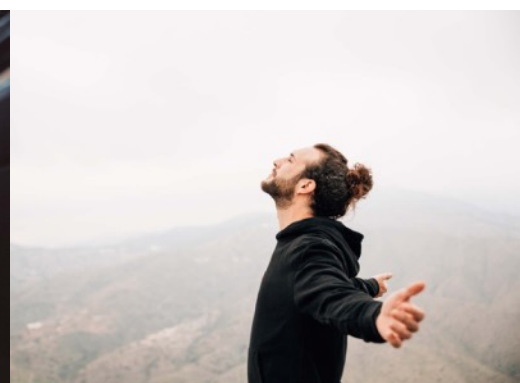
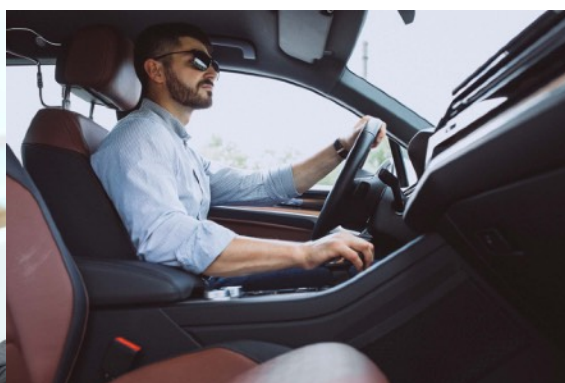
If at any time you feel sick, anxious or mentally disoriented, please advise a staff member immediately.

Refund Policy

We stand behind our programme's 100 percent, and fully believe they are valuable to most of our participants. Should you complete Gateway and for any reason feel that you did not get the experience you want, we will return your money in full.

Right to Exclude

Life Dynamics Training / Gateway reserves the right to refuse enrolment in Gateway Programme to anyone who, in our best judgment, will not benefit from the experience of the Programme at this time. In addition, during the Programme, trainers reserve the right to request any person to discontinue participation at any time. In such cases, we will refund the participant's tuition fee in full.





About Life Dynamics Training

Life Dynamics Training is the leading edge provider in the field of human technology, development and personal transformation.

GATEWAY and other graduate courses are innovative, effective, and immediately relevant to life. GATEWAY, the foundation of the Life Dynamics Training courses, is designed to bring about a fundamental shift in what is possible in peoples lives.

Participants in GATEWAY and other Life Dynamics Training courses and programs see new possibilities for effective action in everyday matters. They are able to achieve higher standards of excellence and intimacy and to think and act beyond existing views and limits - in their personal lives, relationships, and all wider fields of interest.

All work is results orientated with meticulous regard to the day-to-day life of participants.

Clientele come from all walks of life, cultures, income brackets and are of all ages and interests.

They seek to attain deeper meaning and higher purpose to life. To bridge the gap between who they are and who they would like to be. To make a meaningful and lasting difference in their own lives and in the lives of those around them.

Life Dynamics Training has no preconceived ideas of how you should be or should not be, how you should behave or what you should get. What we do have is a method whereby a person may access greater vitality, personal power and freedom for themselves in the world.

The philosophy of the company focuses on the inherent goodness and potential of human beings.

Our clients are those who are interested in the further evolution of what they have become.



Full contact details and addresses

32A – 11th Avenue, Parktown North,
Johannesburg, South Africa.
PO Box 81257, Parkhurst, 2193,
South Africa.

Joni Norval: 083 292 5229

Dr Steven Gullan: 082 330 3857

Email: gateway@lifedynamics.co.za

www.lifedynamics.co.za



What lies behind us and what lies before us are
tiny matters compared to what lies within us

– Oliver Wendell Holmes